

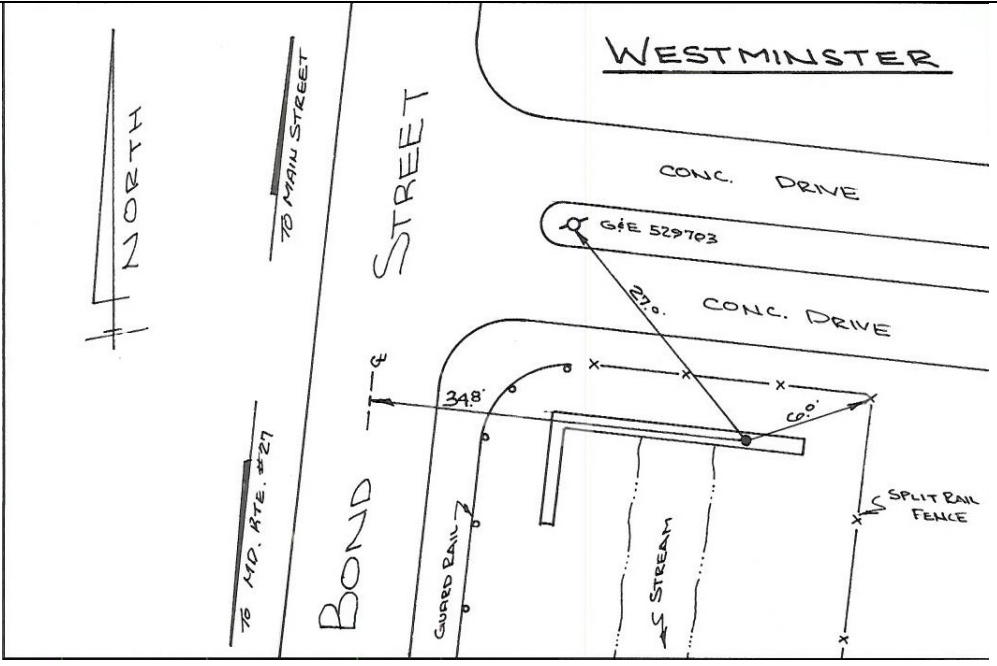
CARROLL COUNTY SURVEY CONTROL

STATION NAME: **141**

N.A.D. 1927 DATUM (IN FEET): N. E.
N.A.D. 1983/1991 DATUM (IN FEET): N. 693371.69 ft. E. 1311479.92 ft.
N.A.D. 1983/1991 DATUM (IN METERS): N. E.
N.G.V.D. 1929 DATUM ELEVATION (IN FEET):
N.A.V.D. 1988 DATUM ELEVATION (IN FEET): 672.333 feet FOUND IN:
STATION ESTABLISHED BY: DATE ESTABLISHED:

DESCRIPTION

A Carroll County control disk set in the top and at the east most end of a AL@ shaped headwall on the east most side of Bond Street. To reach the station from the intersection of Bond Street and Main Street in Westminster, go south along Bond Street for about 0.55 miles to the station in the headwall on the left. The station also being about 0.25 miles north along Bond Street from its intersection with Md. Rte. 27.



RECOVERY NOTES

Recovered May 4 2016 sc

G.P.S. DATUM

HORIZONTAL ORDER: 1st
VERT. ORDER: G.P.S.

LAT:
LONG:
ELLIPS:
ORTHO HT:
GEOID HT:
CONVERG:
SC. FACT:
LAP. COR: